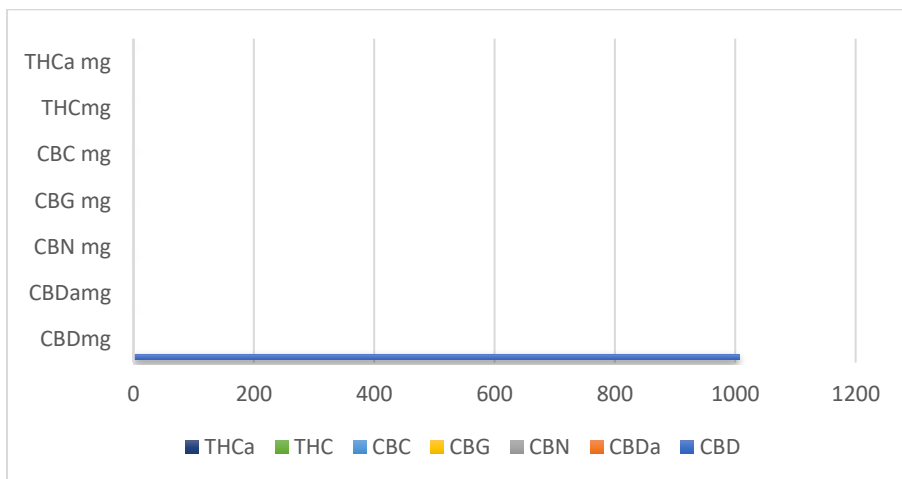


|  |                                      |                              |
|--|--------------------------------------|------------------------------|
| <b>Receipt:</b>  | <b>Date of Report:</b><br>22.02.2023 | <b>Report No:</b> ALCBD3197F |
| <b>Customer:</b> LIQUID CREATIONS  |                                      |                              |
| <b>Address:</b> - Unit 5 Ballymore Business Park, L/Derry, BT47 2TH          |                                      |                              |
| <b>Sample:</b> HEMPTHY CBD FIZZY SOUR PEACHES . 20MG per Gummie. 50 per Pack |                                      |                              |
| <b>Angela Leach Approved Signatory Technical Director</b><br><i>Al Leach</i> |                                      | <b>Comments:</b>             |



| Requirements for CBD Oil  | Mg per container     | Result mg/gummie | LOQ     | Test Method     | Units      |
|---|----------------------|------------------|---------|-----------------|------------|
| THCa  | 0.00                 | 0.00             | 0.0025% | In-House Method | mg / g / % |
| THC   | 0.00                 | 0.00             | 0.0025% | In-House Method | mg / g / % |
| CBC   | 0.00                 | 0.00             | 0.0025% | In-House Method | mg / g / % |
| CBG   | 0.00                 | 0.00             | 0.0025% | In-House Method | mg / g / % |
| CBN   | 0.00                 | 0.00             | 0.0025% | In-House Method | mg / g / % |
| CBDa  | 0.00                 | 0.00             | 0.0025% | In-House Method | mg / g / % |
| CBD   | 1007.00              | 20.14            | 0.0025% | In-House Method | mg / g / % |
| Total Cannabinoids  | 1007.00              | 20.14            |         | In-House Method | mg / g / % |
| <b>Appearance – Free from visual mould, mildew, and foreign matter.</b> | <b>None Detected</b> |                  |         |                 |            |

FINAL APPROVAL DATE: 22.02.2023 APPROVED: *Al Leach* A.LEACH TECHNICAL DIRECTOR

Testing results are based solely upon the sample submitted to AL-BIOSERVICES LTD, in the condition received. AL-BIOSERVICES LTD warrants that all analytical work is conducted professionally in accordance with all applicable standard laboratory using validated methods. Data was generated using an unbroken chain of comparison to NIST traceable Reference Standards and Certified Reference Materials. This report may not be reproduced, except in full, without the written approval of AL-BIOSERVICES LTD

TECHNICAL CENTRE:- TOPLEY HOUSE, OFFICE SUITE 7, 52 WASH LANE, BURY, LANCS. BL9 6AS

Tel:- 0161 764 9221 / 07760760346.

[www.al-bioservices.co.uk](http://www.al-bioservices.co.uk), [al-bioservices@hotmail.co.uk](mailto:al-bioservices@hotmail.co.uk)